



SEAT Alhambra.



01

SEAT.

04 Created in Barcelona
06 Easy mobility

02

Your Alhambra.

10 Exterior design
12 Interior design
14 Technology
18 Safety

03

Your way.

22 FR-Line
26 Xcellence
30 Style
34 Wheels
36 Colours
38 Upholsteries

04

Your accessories.

42 Transport
44 Exterior
46 Interior
48 Protection
52 Infotainment & Safety

05

At your service.





Created in Barcelona.

1953. The first SEAT rolls off our Barcelona production line and a whole country starts moving. More than 60 years later and we're moving people all over the world.

But Barcelona still inspires us. Its creative spirit runs through our veins. Feeds into every car we produce. (In fact, 50% of the energy we use to make our cars comes direct from Mediterranean sunshine). This is a city that never stops. And neither will we. Why? Because you have places to be.



Our global range of cars and product specifications varies from country to country. Please, visit your local SEAT website to know more about the product offer available for you.



Easy mobility.

The world is full of possibilities. SEAT makes it easy to take hold of them. Plot your own route. Set your own goals. Keep moving through your ever-changing life. It's what we do.

Because if it doesn't set you free, drive you forward, make things better, what's the point? If it's not easy, it's not mobility.

Your Alhambra.



The memories start here.

Whatever the size, every family needs backup. Safety, comfort and technology, with zero compromises. The little things that make a big difference. Because these aren't just roads, they're memories. The SEAT Alhambra. Get ready to turn journeys into stories.

Our global range of cars and product specifications varies from country to country. Please, visit your local SEAT website to know more about the product offer available for you.



Exterior design

A world of possibility.

When you have the details right, anything's possible. The SEAT Alhambra brings them all together, with smart and sophisticated features like chrome fittings, a bold front grille in glossy black finish and 18" Alloy Wheels. Because it's your world. You decide how to get the most out of it.





Interior design

Room to grow? You've got it.

Every family's different. There's no one size fits all. Except when you've got 2,430 litres of room on the inside, with a spacious boot for everyone's stuff. And 32 ways of configuring the seats give you all the flexibility you need, for whatever life throws at you.





Technology

They call it magic. You call it easy.

When technology just works, it really is a kind of magic. From the Bi-Xenon headlights that make driving at night more like day, to the Virtual Pedal so you can open your boot completely hands-free, the SEAT Alhambra has more ways to make life magically easy.



Our global range of cars and product specifications varies from country to country. Please, visit your local SEAT website to know more about the product offer available for you.



Technology

Smartphone? Smarter car.

Social media. Entertainment. Maps. The world is in your pocket. And with Full Link technology, your SEAT Alhambra gets seamlessly connected too. Featuring MirrorLink™, Apple CarPlay™ and Android Auto™, your 6.3" colour touchscreen lets you control your world. Smart just got simpler.





Safety

Safer is better.

Nothing matters more than their safety. Key elements like Front Assist and the seat belt reminder for 5 seats come as standard in all models. Want more? 4Drive and DSG deliver more responsive control, while Blind Spot Detection alerts you to unseen obstacles. Multifunctional camera technologies like Lane Assist and Traffic Sign Recognition actively monitor your surroundings and respond or alert you accordingly. Tiredness Recognition helps you stay alert, and with the comprehensive airbag system, everyone is protected. Think about it once, and then know it's taken care of.



Your way.



The time's come to set the rules.

It's all about the choices you make. The SEAT Alhambra makes sure you've got everything you need, for whatever you choose. Whether it's a performance boost, added convenience, or just some extra style and comfort, you've got what it takes. All you need to do is take it.

FR-Line.



Family fun? Turn it up a notch.

Playtime just got serious. The SEAT Alhambra's ready for the challenge. Step into the FR-Line, and the performance, versatility and design take it to another level. From school-runs to camping holidays, this is how you take practical and make it cool.

Sporty touches.

Every journey should be a memorable experience. And the FR-Line puts the fun into function. From the details on your steering wheel, to the style of the seats, it's not just about getting there. It's about how you feel when you arrive.

Wheel appeal.

The FR-Line's 18" Akira Atom Grey Alloy Wheels are built for action. The sports heritage brings powerful handling. Durability and strength bring reliability. Now all you've got to do is bring the adventure.



Standard equipment.

Safety

- Multifunctional Camera including: Blind Spot Detection, Lane Assist and Front Assist
- Seat belt reminder for 5 seats
- Driver and front passenger airbag, with knee airbag and airbag deactivation
- Cruise Control
- Driver Alert System
- ISOFIX/Top Tether in rear seats (for three rear child seats)
- Power-operated child safety lock

Exterior

- Dark-tinted windows
- Akira 18" Atom Grey Alloy Wheels (over 16")
- Foldable exterior mirrors with parking position
- Exterior mirror in Atom Grey
- Side stickers
- Windscreen wiper intermittent control with rain sensor
- Fog lights with cornering function
- Halogen twin headlights
- LED tail lights
- FR-Line badge on front grille & rear

Electronics

- Parking sensor, front & rear
- Speed-related variable steering assist (Servotronic)
- Navi System including Europe's cartography, Rear View Camera, Combi Colour instrument
- Multifunction Display board computer
- 8 speakers (passive)
- Power-adjustable lumbar support for left front seat
- Electronically controlled air conditioning system
- 12V plugs in front central console (2 for 5 seats, 1 for 7 seats) and in boot
- 2 USB charging ports in 2nd row

- Heat-protected side and rear windows
- Kessy without Safe function
- Tailgate/boot lid unlocking from outside
- Electric parking brake with Auto Hold function
- Tyre pressure warning indicator

Interior

- 3 spokes steering wheel in leather with multifunctional capabilities (Triptronic)
- Leather gear knob handle
- FR-Line logo on doorstep and key cover
- Black interior, Sport seats in black with red stitching, leather steering wheel with FR logo and red stitching, gear knob in leather with red stitching
- Floor mats with red piping (Accessories)
- Drawers under front seats
- Folding table on front seat backrests
- Interior tailgate light
- Chrome Pack
- Storage compartments in roof console
- Storage compartments in doors (front: 1.5l bottle and map holder)
- Boot with additional storage compartments
- Sunshade
- Lockable, illuminated and refrigerable glovebox
- Illuminated sun visors with makeup mirror



01



02

01 Private space.

With the Atom Grey exterior mirrors, you'll see them outside. But your dark-tinted windows stop them seeing inside.

02 Choose to cruise.

The multifunctional steering wheel with in-built Cruise Control keeps everything you need, right where you need it.



03



04

03 Shift smart.

Your leather gear knob with DSG and 7 speeds gives you perfect control of the engine. First, second and you're away.

04 Show your stripes.

You think it's cool. They think it's a race car. These stylish stickers bring a sporty dimension to your doors.



05



06

05 Badge of honour.

The front grille in glossy black finish is just another way you'll stand proud. Complete with FR logo, you're the boss.

06 Working as one.

Combine communication, navigation and entertainment, the Navi System brings it all together, effortlessly.

Xcellence.



They're worth it.

They only deserve the best. The SEAT Alhambra's new Xcellence trim takes a family car, and lays on the refinement. With the details just right, it's time to indulge a little bit more.

Top of the class.

The Bi-Xenon headlights keep the road ahead as clear as day, while the front grille in glossy black finish means you'll shine for all the right reasons.

Signs of excellence.

You've got the best. You made the right choice. The Xcellence details on the steering wheel pin and door panel lettering are there to prove it.



Standard equipment.

Safety

- Multifunctional Camera including: Blind Spot Detection, Lane Assist and Front Assist
- Seat belt reminder for 5 seats
- Driver and front passenger airbag, with knee airbag and airbag deactivation
- Cruise Control
- Driver Alert System
- ISOFIX/Top Tether in rear seats (for three rear child seats)
- Power-operated child safety lock

Exterior

- Dark-tinted windows
- Bumpers and door handles in body colour
- Wheel bolts with anti-theft protection (unlockable)
- Dynamic 17" 48/2 Alloy Wheels (over 16")
- Chrome Pack
- Foldable exterior mirror with parking position
- Body-coloured exterior mirrors with integrated LED indicators
- Windscreen wiper intermittent control with rain sensor
- Fog lights with cornering function
- Halogen twin headlights
- LED tail lights
- Separate daytime running light with automatic headlight control and Coming Home feature

Electronics

- Parking sensor, front & rear
- Speed-related variable steering assist (Servotronic)
- Navi System including Europe's cartography, Rear View Camera, Combi Colour instrument
- Multifunction Display board computer
- 8 speakers (passive)
- Electronically-controlled air conditioning system
- 12V plugs in front central console (2 for 5 seats, 1 for 7 seats) and in boot

- 2 USB charging ports in 2nd row
- Heat-protected side and rear windows
- Kessy without Safe function
- Comfort turn signal (1 touch = 3 lightings)
- Tailgate/boot lid unlocking from outside
- Electric parking brake with Auto Hold function
- Tyre pressure warning indicator

Interior

- 3 spokes steering wheel in leather with multifunctional capabilities (Triptronic)
- Leather gear knob handle
- Scuff plates in door apertures
- Xcellence logo on steering wheel
- Xcellence lettering on doorstep
- Drawers under front seats
- Folding table on front seat backrests
- Manual height adjustment for front seats, electric backrest adjustment for left front seat
- Three single seats (1st row of seats)
- Sport comfort seats in front
- Boot with additional storage compartments
- 4 hooks in boot
- Lockable, illuminated and refrigerable glovebox
- Sunshade
- Illuminated sun visors with makeup mirror



01



02

01 Roll in style.

17" Alloy Wheels. Just four more reasons you'll stand apart.

02 Find your way.

Never be lost again with the Navi System, which keeps you in the know with full connectivity and map updates.



03



04

03 The right light.

The LED interior lighting system ensures you always have the correct amount of illumination for any situation.

04 Step up to the plate.

With the Xcellence doorstep, every time you get inside and every time you leave, you'll be reminded that you chose the best.



05



06

05 Fancy footwork.

A wave of your foot is all it takes to open the boot. If you're carrying the family's gear, easy access is just a swipe away.

06 Power to the people.

Everyone has at least one device. With dual-USB ports built in, the whole family can power up on the go.

Style.



Every moment is special.

The perfect blend of form and function, the Style trim in the SEAT Alhambra is tailored to family life. Whatever the situation, whenever the mood strikes, you've got the style and security to get you there.

Sky's the limit.

The panoramic sunroof brings the outside inside, at the push of a button. Warm summer days in the countryside, here we come.

The closest bonds.

Full Link. It's your way of always staying in touch. Connect any compatible smartphone, and bring its functionality to your SEAT Alhambra.



Standard equipment.

Safety

- Multifunctional Camera including: Blind Spot Detection, Lane Assist and Front Assist
- Seat belt reminder for 5 seats
- Breakaway rear view mirror with auto-dimming
- Driver and front passenger airbag, with knee airbag and airbag deactivation
- Cruise Control
- Driver Alert System
- ISOFIX/Top Tether in rear seats (for three rear child seats)
- Power-operated child safety lock

Exterior

- Wheel bolts with anti-theft protection (unlockable)
- Design 16" 48/1 Alloy Wheels
- Foldable exterior mirrors with parking position
- Body-coloured exterior mirrors with integrated LED indicators
- Windscreen wiper intermittent control with rain sensor
- Fog lights with cornering function
- Halogen twin headlights
- LED tail lights
- Separate daytime running light with automatic headlight control and Coming Home feature

Electronics

- Speed-related variable steering assist (Servotronic)
- Navi System including Europe's cartography, Rear View Camera, Combi Colour instrument
- Multifunction Display board computer
- 8 speakers (passive)
- Electronically-controlled air conditioning system
- 12V plugs in front central console (2 for 5 seats, 1 for 7 seats) and in boot

- 2 USB charging ports in 2nd row
- Heat-protected side and rear windows
- Central locking with radio remote control, interior controls, without Safe function
- Tailgate/boot lid unlocking from outside
- Electric parking brake with Auto Hold function
- Tyre pressure warning indicator

Interior

- Height and reach adjustable steering wheel
- 3 spokes steering wheel in leather with multifunctional capabilities (Triptronic)
- Leather gear knob handle
- Backrest release for right front seat
- Drawers under front seats
- Folding table on front seat backrests
- Manual height adjustment for front seats, electric backrest adjustment for left front seat
- Cup holders
- Boot with additional storage compartments
- Adjustable and removable boot cover
- 4 hooks in boot
- Lockable, illuminated and refrigerable glovebox
- Illuminated sun visors with makeup mirror



01



02

01 Open sesame.

Getting everyone and everything in and out should be easy. The electric sliding doors and tailgate make it that little bit easier.

02 Stay vigilant.

Sometimes, family life can be exhausting. The Tiredness Recognition System ensures you stay alert if you start to feel tired.



03

03 Slip into comfort.

The optional Sport seats in your SEAT Alhambra are soft, resistant and pure luxury.



05

04 Tailored temperature.

3-zone Climatronic control, adaptable to the first and second row of seats, so everyone can have things just right.

05 See them coming.

The Blind Spot Detection system works using an LED in your rear view mirror, so you're aware of any invisible objects.

06 Time to relax.

At the end of a long day, what better way to unwind than with your own personal massage seat in the front? It's your moment to take it easy.

Wheels.

16"



Design 48/1 St

17"



Dynamic 48/1 St



Dynamic 48/1
Atom Grey St



Dynamic 48/2
Atom Grey St

18"



Performance XE

17"



Dynamic 48/2 XE



Dynamic 48/3
Glossy Black St XE

18"



Akira St XE



Akira
Atom Grey FR

Style St
Xcellence XE
FR-Line FR
Standard ■
Optional ■



Colours.



Pure White¹ St XE FR



White Silver² St XE FR



Indium Grey² St XE FR



Deep Black² St XE FR



Black Oak Brown² St XE FR



Moonstone Silver² St XE FR



Urano Grey¹ St XE FR



Atlantic Blue² St XE FR



Reflex Silver² St XE FR



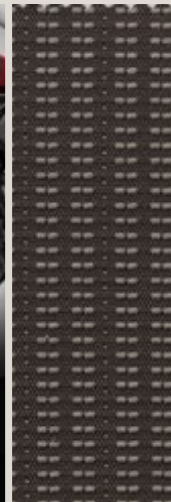
Romance Red² St XE FR

- Style St
- Xcellence XE
- FR-Line FR
- Standard
- Optional

¹Soft colour.
²Metallic colour.



Upholsteries.



Cloth Dark Grey and Grey Comfort seats XC

St



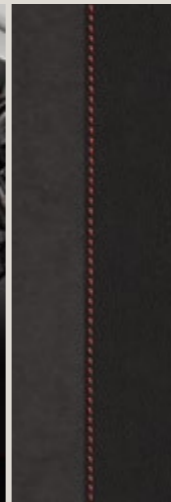
Cloth Black and Grey Comfort seats DM

St



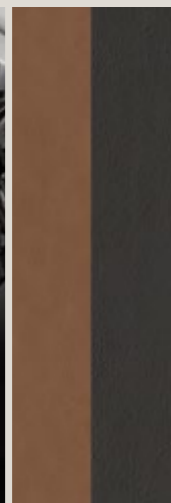
Cloth Grey Mikelly EF

XE



Alcantara® Black sport seats FR-Line FL + PFR

FR



Leather Black and Cognac Sport seats XY + WL1

St XE



Leather Black Sport seats JJ + WL1

St XE



Alcantara® Black Sport seats JJ + PLT

St XE

Style St

Xcellence XE

FR-Line FR

Standard

Optional



Your accessories.

Versatility starts here.

Sometimes, the little extras go a long way. With those covered, you can focus on quality time. Weekend cycles. Trips to the beach. Family adventures. Whatever keeps you busy, tailor your SEAT Alhambra to be exactly how you want it.



Our global range of cars and product specifications varies from country to country. Please, visit your local SEAT website to know more about the product offer available for you.



Transport.

Need some help with the heavy lifting? Families come with a lot of stuff, so this range of tailormade accessories makes it easy to take it with you. Whether it's a road trip or the latest hobby, there's a solution to get you there.

450l roof box.

Get box clever. Carrying almost anything you'll need, the double-plastic walls are durable, protecting your stuff in harsh weather conditions, and the aerodynamic shape improves handling. Easy to attach and use and fully compatible with roof bars, it's ready for any adventure.

Hatchback bike rack.

If you love cycling, the hatchback bike rack is a must. Able to safely transport up to 3 bikes, it comes pre-assembled for easy installation. Carrying up to 60kg, with an integrated anti-theft system, all you need to do now is hit the trails.



01 Load stop rack.

One day you might need one thing. The next day, another. The load stop rack doesn't mind. You decide, and it's good to go.

02 Ski rack.

Straightforward skiing. The sturdy aluminium ski rack complete with anti-theft system is easy to mount and use.

03 Surf rack.

Used with the roof bars and storing up to 2 surfboards, the surf rack's ultra-adaptable supports keep it easy to use.

04 Tow bar.

If you have a trailer, the tow bar makes fitting and removing it simple and safe. Your capacity just got a boost.



Exterior.

Every detail adds up to something unique. And for something that you use every day, you'll want it to be just right. These decorative elements for your SEAT Alhambra's exterior combine effortless cool with functional design, taking your look to another level.



Chrome exterior mirror covers.

A splash of chrome on your exterior mirrors adds an extra dimension of luxury. Timeless design that you'll enjoy again and again. You'll see them, and they'll be looking.

Hatch door moulding.

Cool and refined, the hatch door moulding in chrome gives your tailgate a real touch of flair.



Interior.

Make each ride more comfortable with a range of clever upgrades to the interior of your SEAT Alhambra. For those long journeys, or just a quick trip to the shops, they're the practical details that you'll find indispensable.

Espresso machine.

A better kind of daily grind. When you're on the road, there's nothing quite like a handmade cup of coffee. The auto-set espresso maker, complete with 12V adaptor, ensures you'll always have the perfect cream in any situation.

Cup holder.

This multifunctional storage device is innovatively shaped to fit a lot into a small space. From keys and stationery, to all of life's necessities, clear up the clutter and have everything to hand.

Inox side sills.

Easy to set in place, the custom, laser-etched Inox side sills carry your Alhambra's name. Stylish and protective, they also make getting in and out of the front seats more practical.

Sun shades.

Whether it's a sunny day, or you're driving at night, these shades help you to maintain visibility on the road, and regulate the temperature inside the car. When it comes to staying safe and cool, it's one of the simplest things you can do to your SEAT Alhambra.





Protection.

Family life can get messy. Keeping your SEAT Alhambra in great condition is the best way to keep enjoying it to the fullest, while maintaining its value. This range of simple solutions are there for when you need some extra protection.

Separation grille.

Divide your boot into sections to keep whatever you want to take with you safe and secure. Attaching easily to the rear seats, it's just another way you'll keep your passengers and your SEAT Alhambra happy and protected.



Anti-slip boot tray.

Tailormade, the anti-slip boot tray is designed to protect against dampness and dirt, while preventing objects from sliding around in the back. Light, flexible and durable, you can simply roll it up when you're not using it.



Front and rear mudflaps.

Prevention is always better than cure. These front and back mudflaps protect the floor, bumper, sides, doors and rear of your SEAT Alhambra. Dirt? No problem. Gravel? Not today. And water getting where it shouldn't? A thing of the past.

**You
decide.**



They enjoy.



Infotainment & Safety.

Keeping everyone comfortable and safe is really all there is to it. How you do it is up to you. The SEAT Alhambra comes with a range of options to protect what's important, and make every journey that little bit better. From custom seats to infotainment devices, even the longest journeys will fly by.

Full Link.

Full Link technology is your way of bringing the whole world to them. Compatible with almost any model of smartphone, turn your SEAT Alhambra into a state-of-the-art information and entertainment system on wheels. If you're looking for a way to make the journey more interactive, this is the new standard.

SEAT PEKE G1 Trifix I-Size.

Complete with removable and washable cover, the SEAT PEKE G1 Trifix I-Size is designed around your child. Suitable for mass groups II, III (15 kg - 36 kg) with a high adjustable backrest, it's installed either with the car seat belt or ISOFIX plus car seat belt. Given the choice, this is safety and comfort at its best.



Our global range of cars and product specifications varies from country to country. Please, visit your local SEAT website to know more about the product offer available for you. The closed dashboard compartment (used on the SEAT Alhambra) will not be available until week 19/20. Once the closed dashboard parts are available again, a retrofit can be performed by the dealer.

At your service.

Freedom starts where worry ends.

Life's too short to stand still. The experts in our SEAT Service team use only SEAT Genuine Parts to keep your SEAT Alhambra at its best – and you at your most relaxed.



Life's for living.

With SEAT CARE, you benefit from a package of SEAT After Sales services at a fixed and competitive monthly rate. Value for money, with the service you expect. Starting from XX€/month, you can save up to 50% compared to standard costs. Fewer worries. For more fun.



We care. You don't have to.

The SEAT Warranty Extension lets you extend your 2-year manufacturer's warranty for 1, 2 or 3 years, or up to 100,000 km – whatever comes first. And if your car is new, the warranty comes included. Easy. Cost-effective. Worry-free.



Need anything? Just call.

Want a tow? More fuel? On-the-spot repair? SEAT Mobility Service is here for you. 24/7. Everywhere in the EU, plus most neighbouring countries. For up to 10 years. This is complete, reliable roadside assistance. And best of all? If your SEAT is new, you get 2 years free.



Relax. We've got this.

SEAT Insurance is tailor-made to your car. To keep you moving all year round. Our 24-hour customer service and official workshops using only SEAT Genuine Parts get you back on the road. Vandalism or theft? No problem. We're your ride.



Forget about it. It's covered.

Why worry? SEAT Service & Maintenance contracts cover most services in the SEAT Service Programme for the first 3, 4 or 5 years of ownership. Available in Basic or Premium, with options for financing. So you can focus on the more important things in life.



SEAT is committed to a policy of continuous product development and reserves the right to make changes to specifications, colours and prices without notice. The information in this brochure can therefore be given as guidance only. While SEAT makes every effort to ensure that specifications are accurate at the time of publication, you should always check with your authorised SEAT Partner for the latest information. Due to limitations of the printing process the colours reproduced in this brochure may vary slightly from the actual paint colour and material. This vehicle and all its parts, as well as the original spares, were designed according to the Legal Regulations governing the prevention and minimisation of Environmental Impact, through the use of recycled/recyclable materials, with measures taken to achieve suitable recycling for the conservation and improvement of environmental quality.